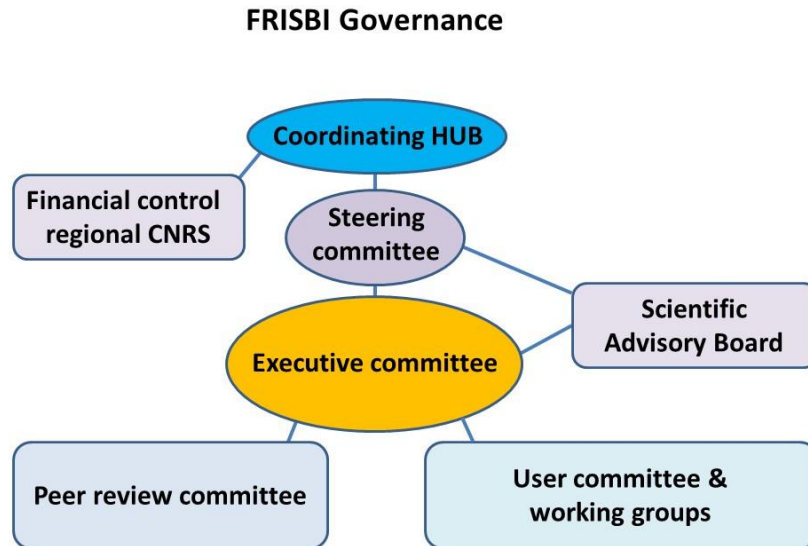


# FRISBI Governance structure

## Accord de Consortium



**Coordinating HUB** localized at Instruct Centre France 1 – IGBMC: Director Bruno Klaholz; Manager Marie-Christine Poterszman

**Steering Committee:** CNRS (President), CEA, Inserm, EMBL, Université de Strasbourg, Université Grenoble Alpes, Université de Montpellier, Université d’Aix Marseille, Université Paris-Saclay.

**Executive Committee:** 2 representatives of each centre (director and deputy)  
Instruct Centre France 1 – IGBMC: Bruno Klaholz and Jean Cavarelli  
Instruct Centre France 2 – IBS/ISBG : Darren Hart and Cécile Breyton  
CBS : Martin Cohen-Gonsaud and Pierre-Emmanuel Milhiet  
AFMB : Yves Bourne and Gerlind Sulzenbacher  
Paris-Saclay: Julie Ménétrety and Sophie Zinn

**Scientific Advisory Board (SAB):** Yvonne Jones (Presidente) Felix Rey, Vladimir. Sklenar, Holger Stark and Christoph Mueller.

**Peer review committee:** engineers and scientists of the 5 FRISBI centres

**User community:** <https://frisbi.eu/network/user-community/>

**Working Groups:** <https://frisbi.eu/network/working-groups/>